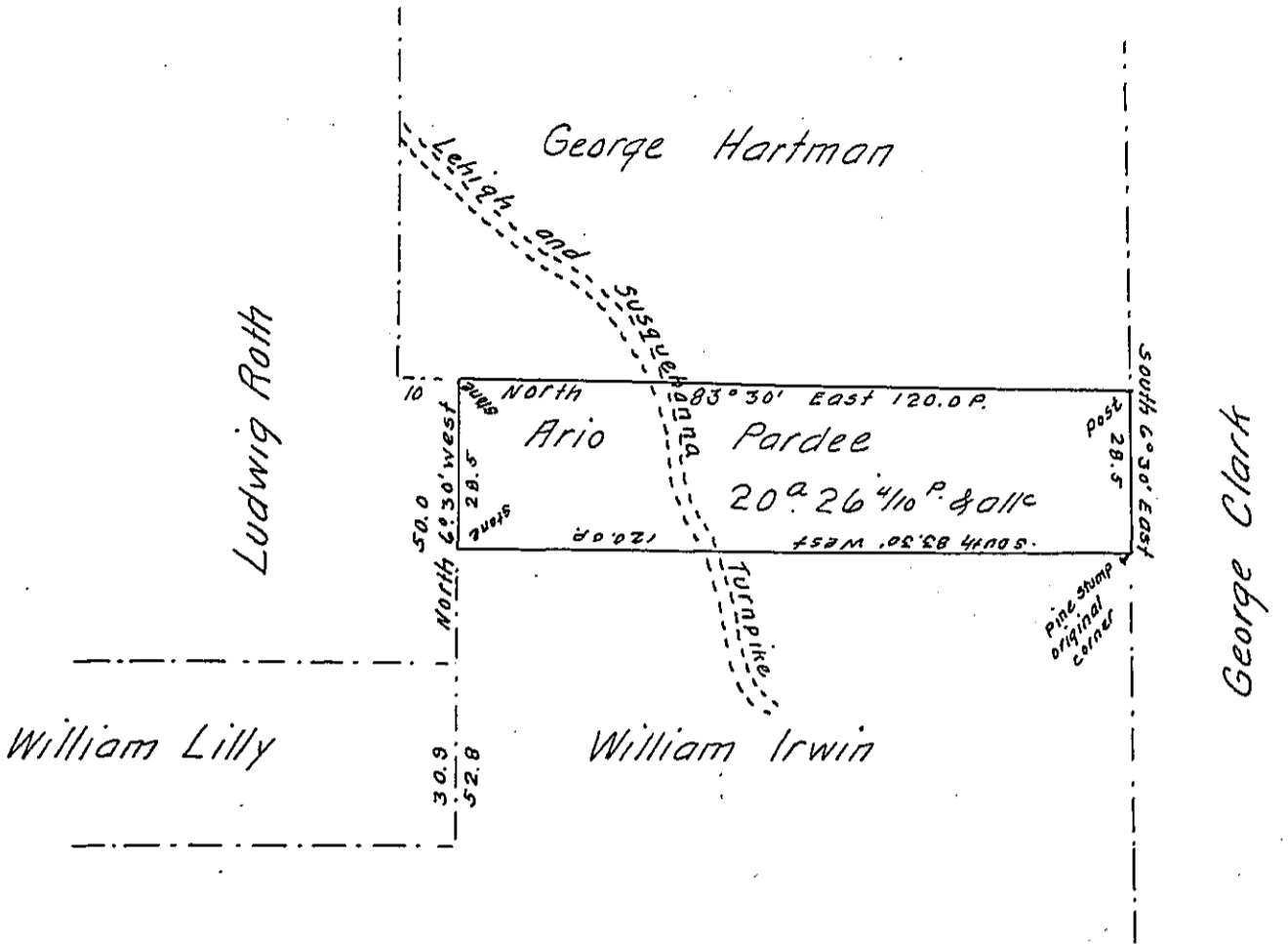


Hazel Twp
Luzerne



Draft of a tract of land (Unimproved) Situate in Hazel township Luzerne County. Adjoining lands in the Warrantee name of George Clark on the East. William Irwin on the South. Ludwig Roth on the West and George Hartman on the North. Containing twenty acres twenty six and four tenths perches and allowance of Six per cent for roads &c. Surveyed the above described tract of land for Ario Pardee the tenth day of March A.D. 1874. in pursuance of his Warrant dated the second day of February A.D. 1874.

To Hon. Robt. B. Beath }
Surveyor General }

J. P. Weller
County Surveyor of
Luzerne County.

IN TESTIMONY that the above is a copy of the original remaining on file in the Department of Internal Affairs of Pennsylvania, made conformably to an Act of Assembly approved the 16th day of February, 1833, I have hereunto set my Hand and caused the Seal of said Department to be affixed at Harrisburg, this thirteenth day of June 1906.

James D. Pearson
Secretary of Internal Affairs.